

Débriefing questionnaire
du vendredi 1^{er} octobre 2010

Que vous inspire le commentaire du narrateur du documentaire sur Némausus lorsqu'il dit:
«habiter un immeuble de Jean Nouvel, c'est habiter un tout»?



Que vous inspire le commentaire du narrateur du documentaire sur Némausus lorsqu'il dit:
«habiter un immeuble de Jean Nouvel, c'est habiter un tout»?

L'architecture est-elle un art où l'artiste gère sa création du début à la fin, où faut-il accepter que l'architecture «échappe», à un moment donné, à son créateur pour appartenir à ses habitants?

Beaucoup de photos d'architecture sont réalisées entre la fin du chantier et avant l'arrivée des occupants. Elles sont souvent mise en scène, gommant toute trace du quotidien avec pour but de magnifier une «esthétique» architecturale.

Doit-on croire que l'architecte, par son architecture, participe à sa manière à une «formation esthétique» des habitants?
En a-t-il les moyens? le droit? La question est ouverte ;)

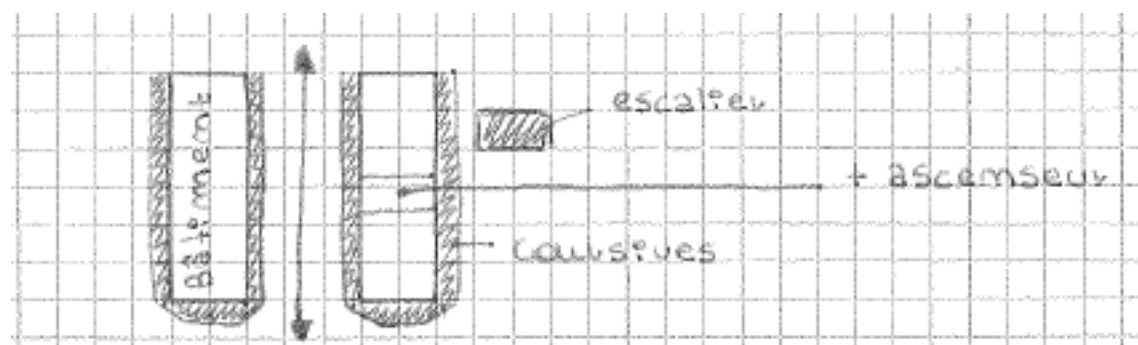
Dessinez le principe des circulations de
l'immeuble « Némausus »



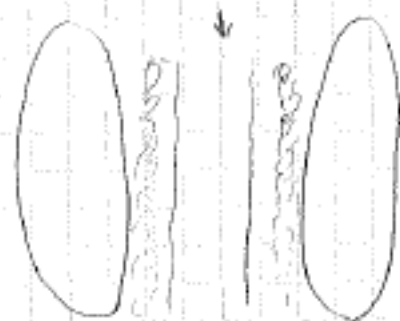




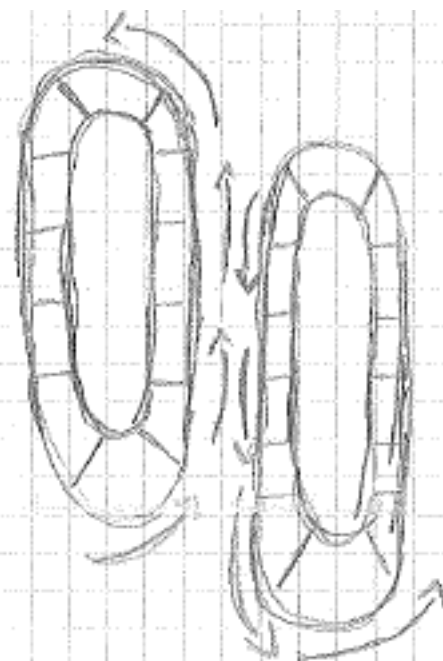
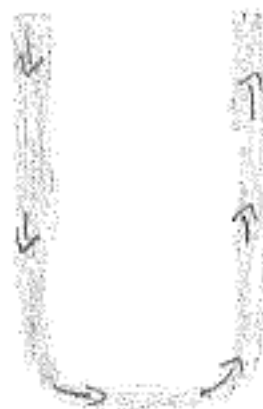
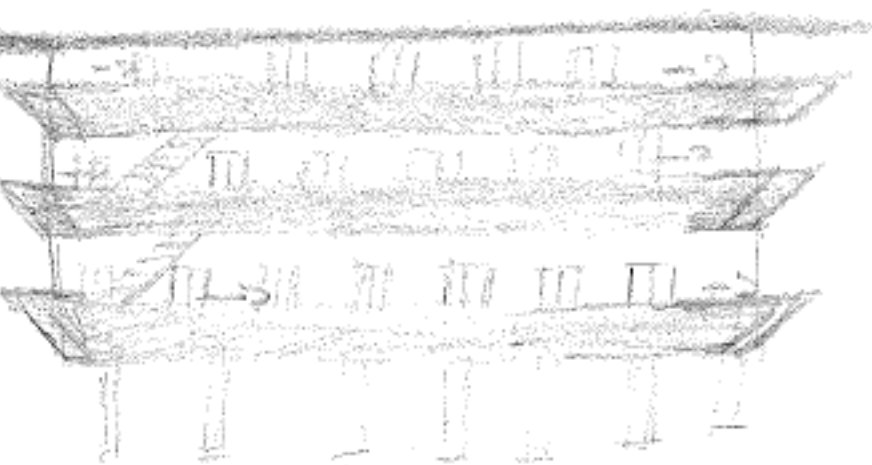


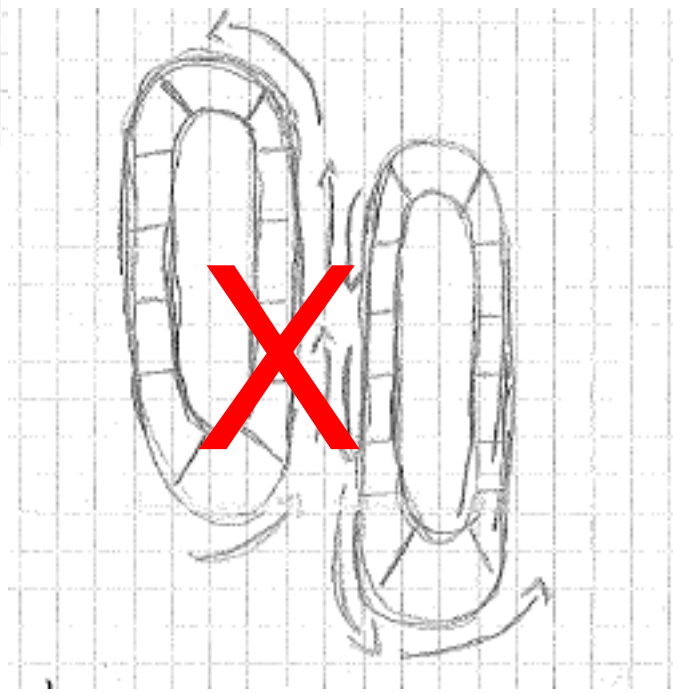
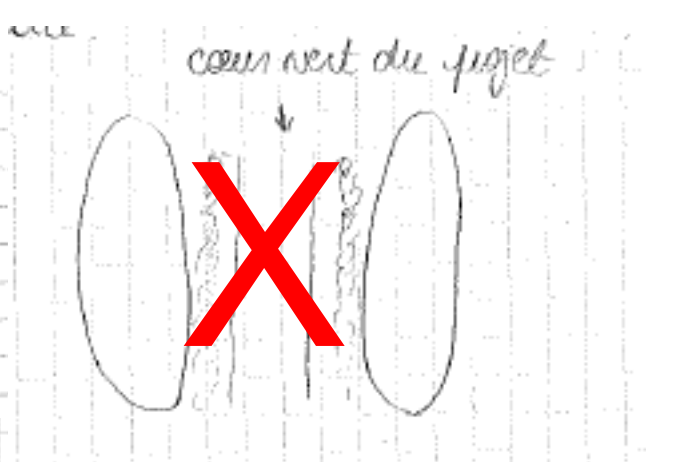
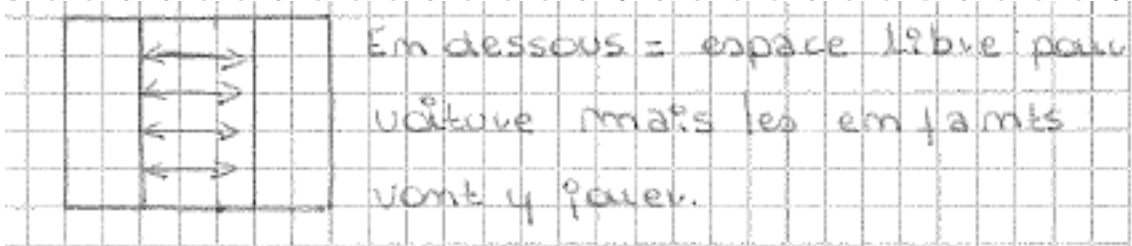
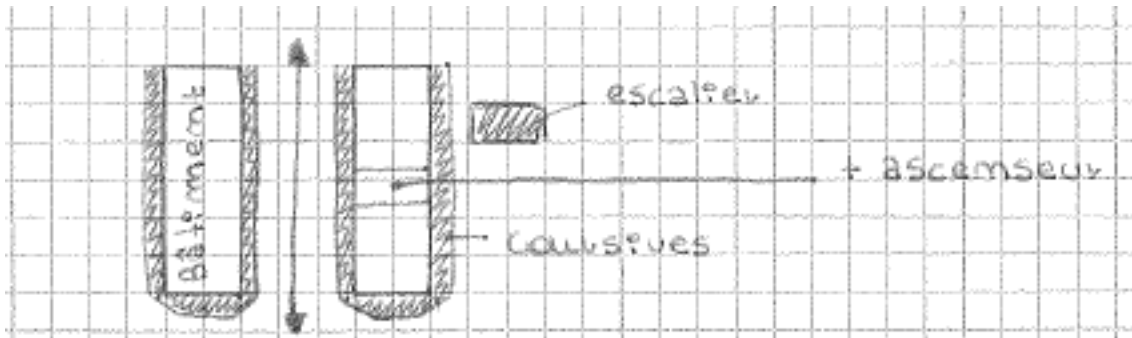


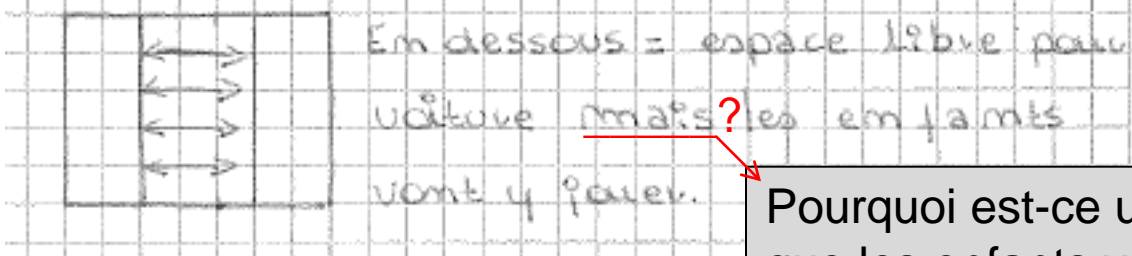
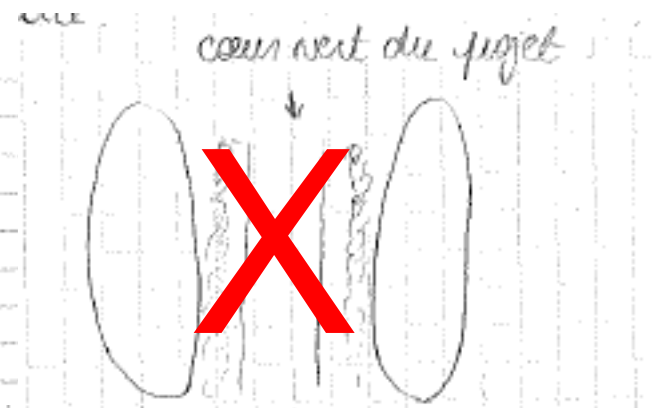
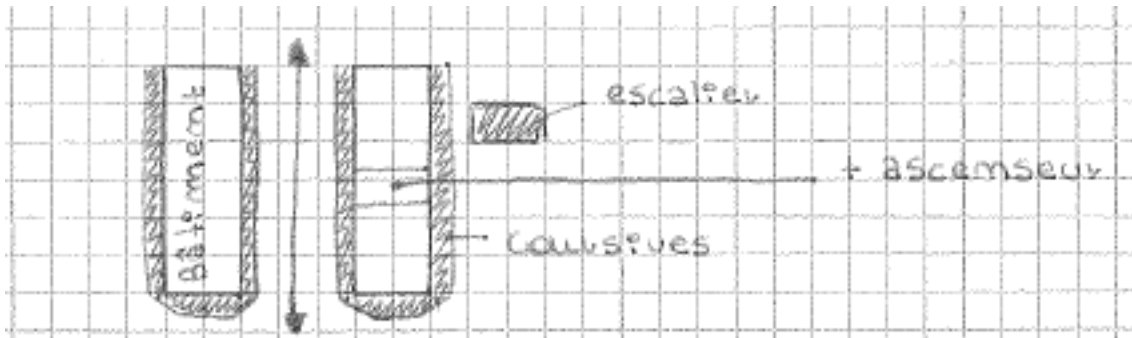
vue
coursives du projet



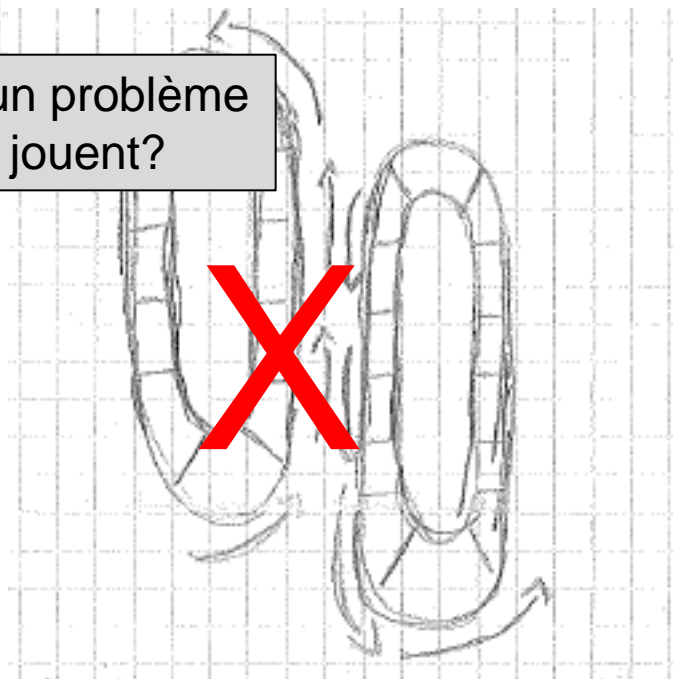
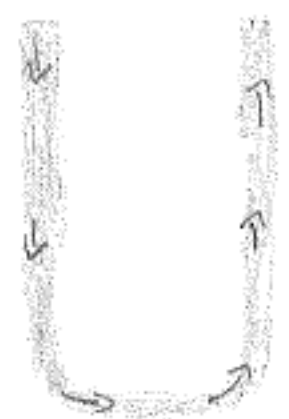
En dessous = espace libre pour
voiture mais les emplacements
vont y payer.

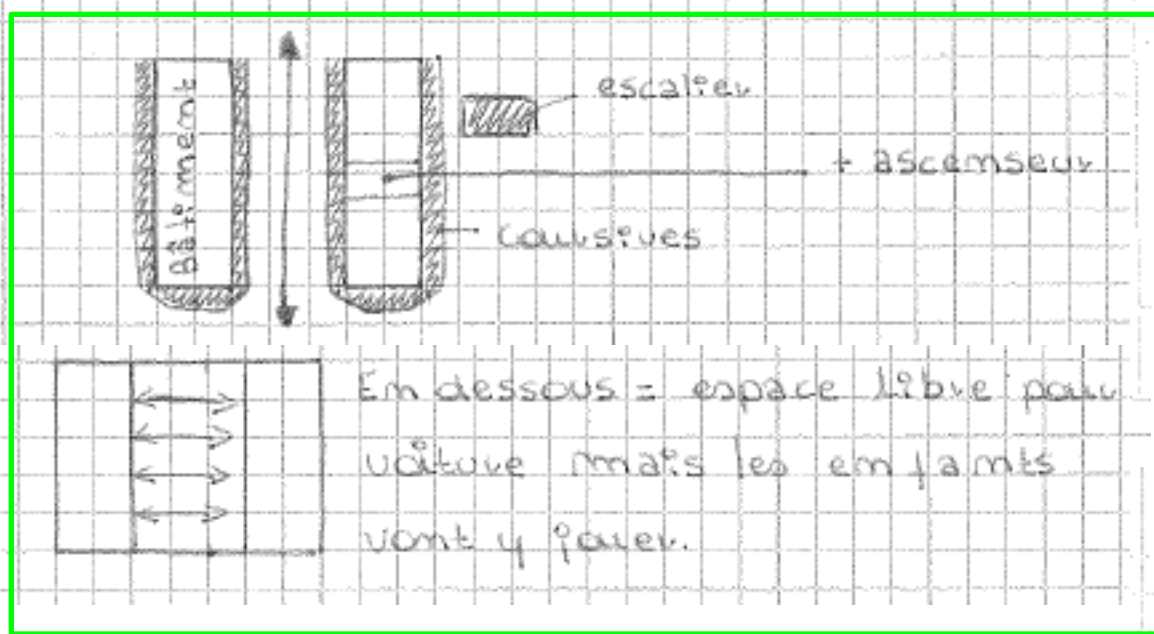




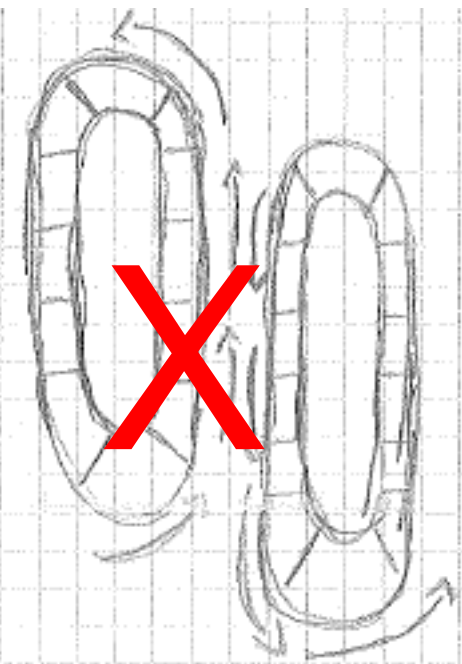
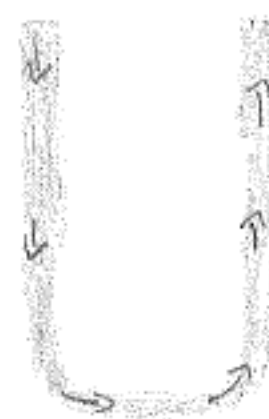
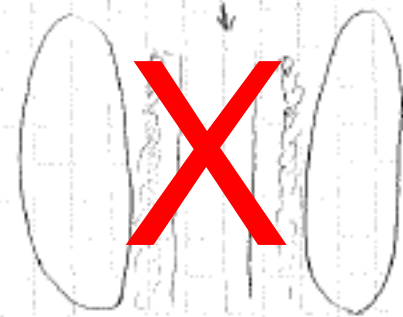


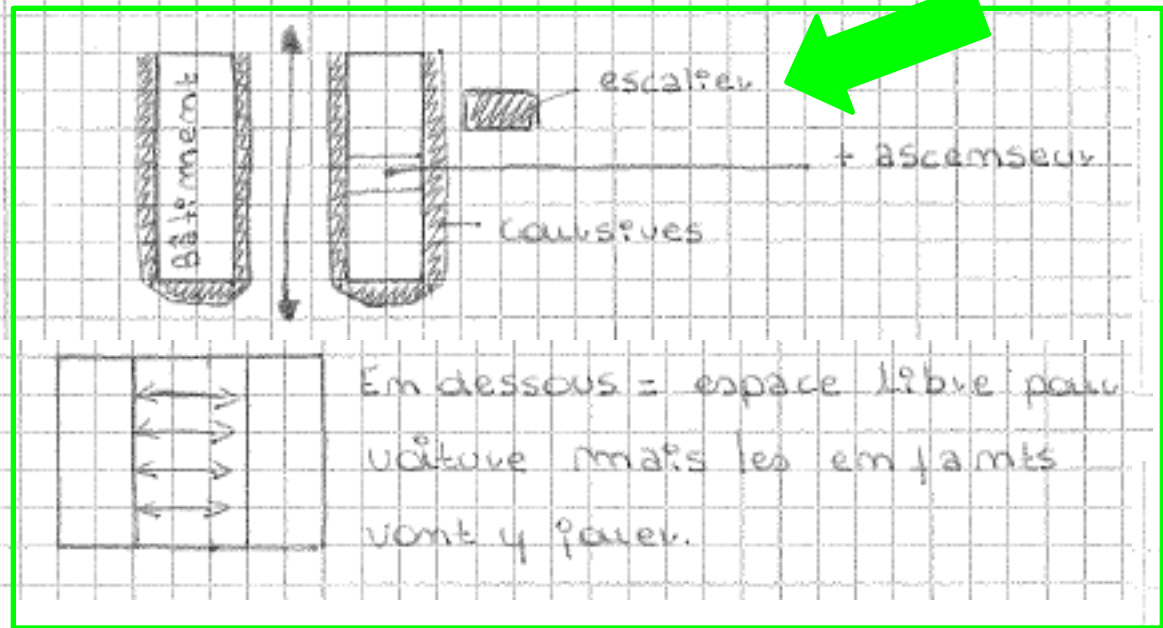
Pourquoi est-ce un problème
que les enfants y jouent?



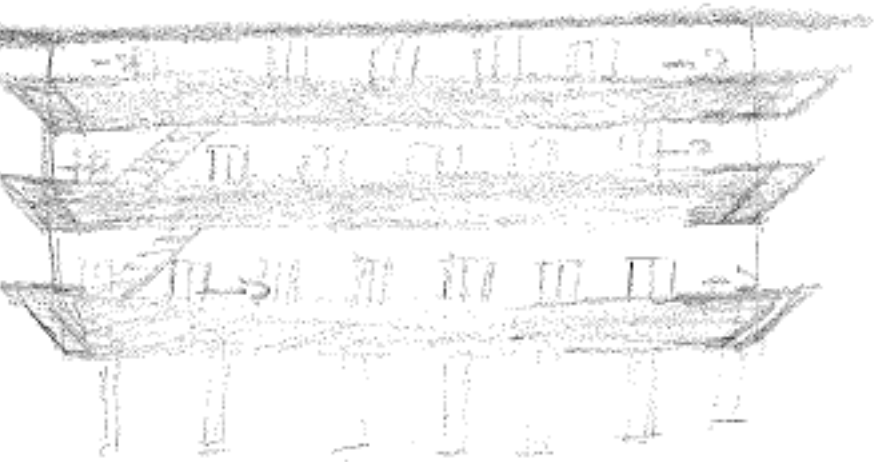
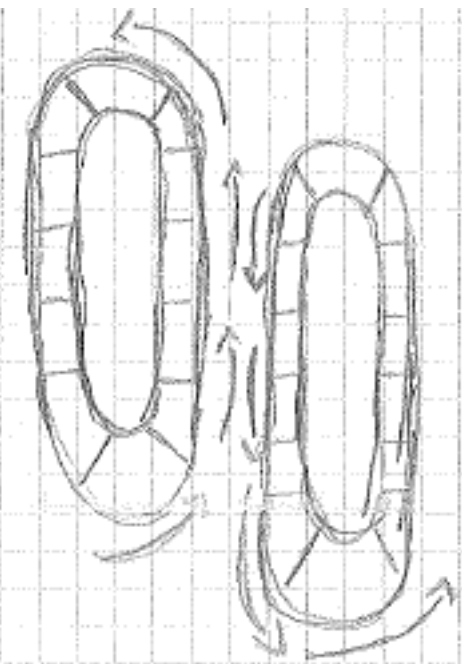
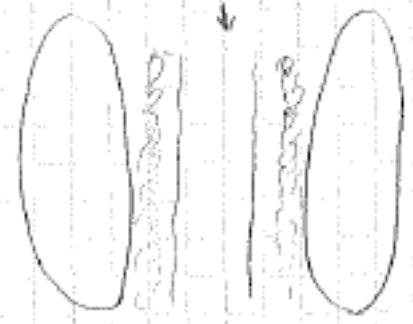


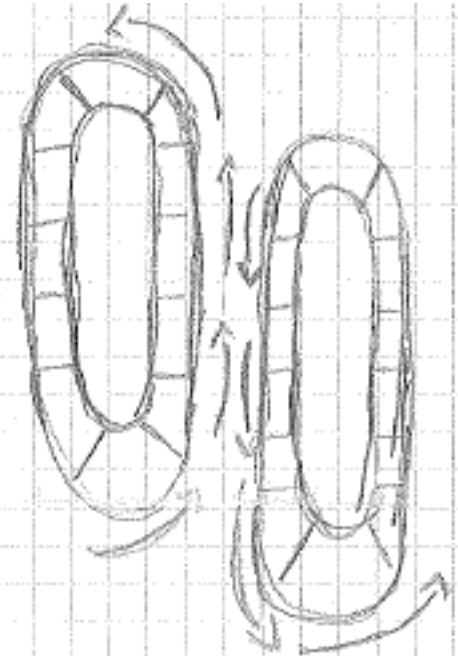
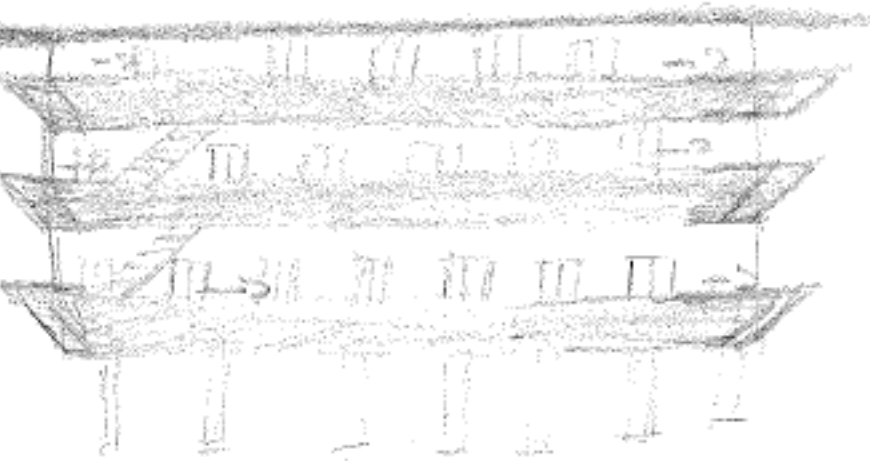
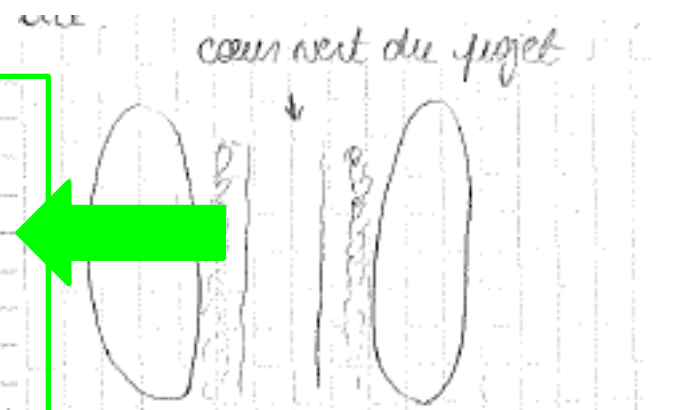
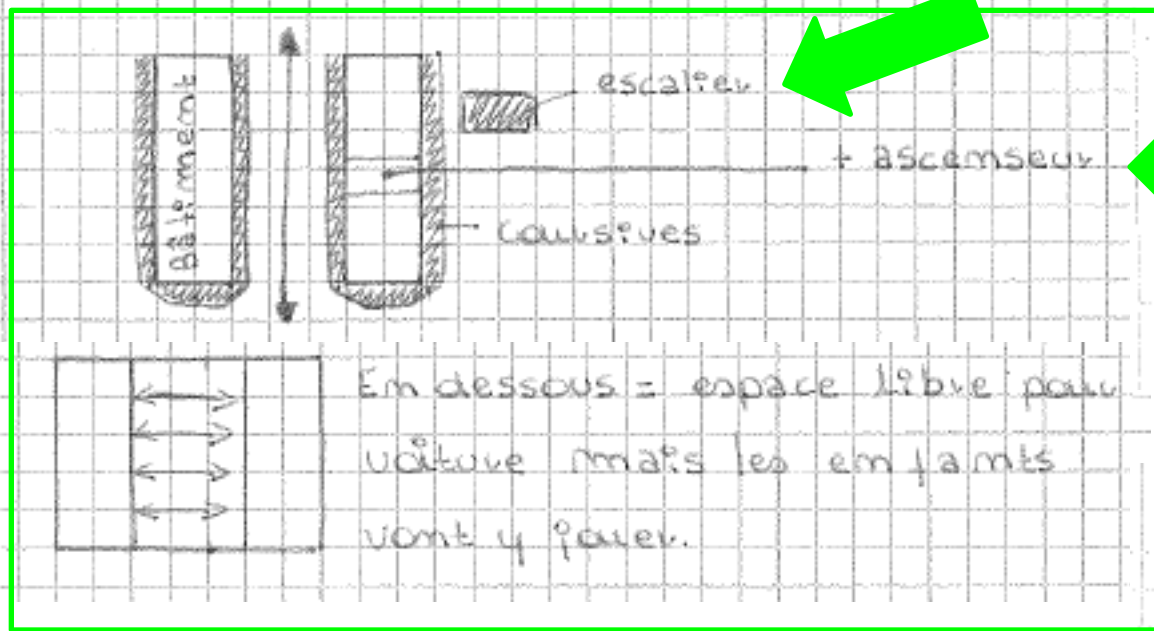
me
coursives du projet

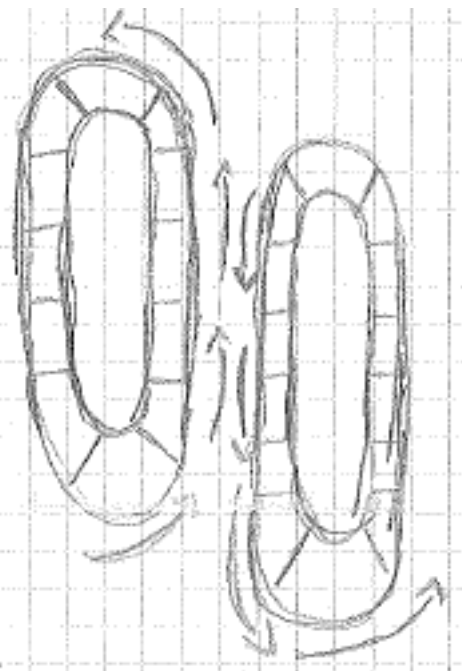
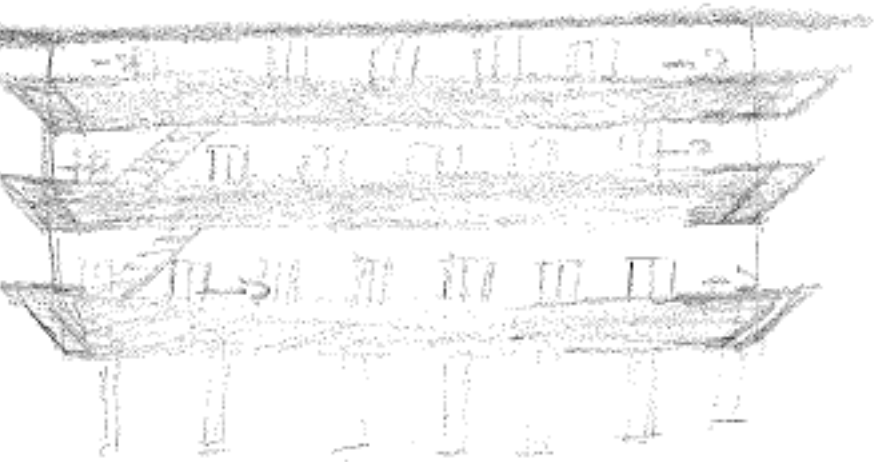
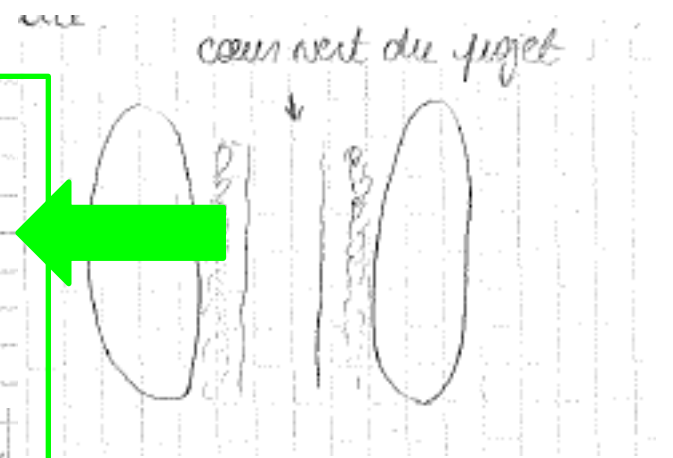
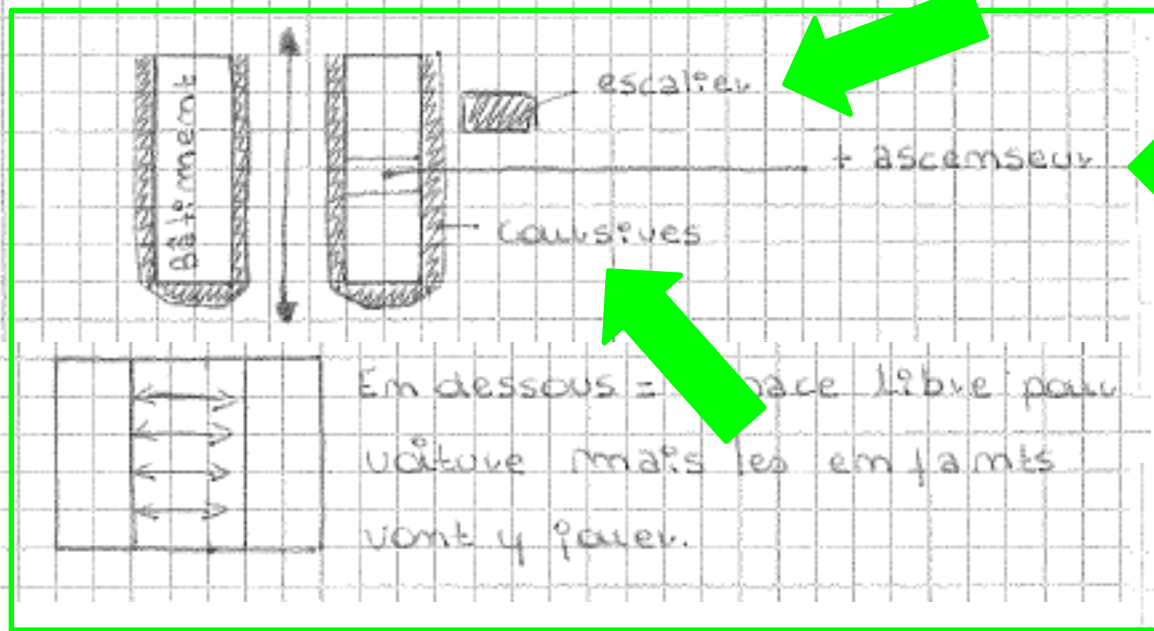


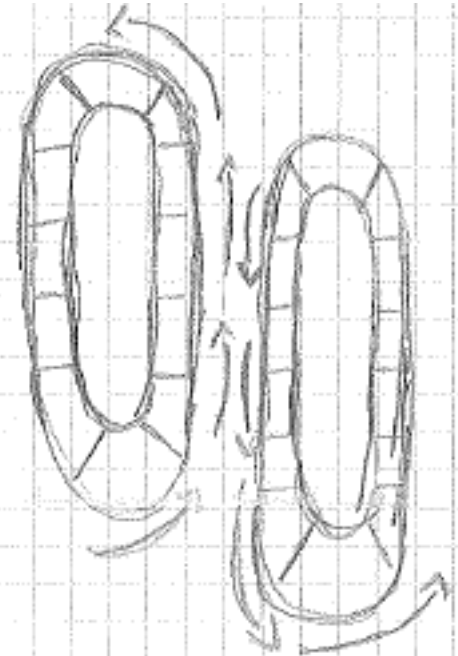
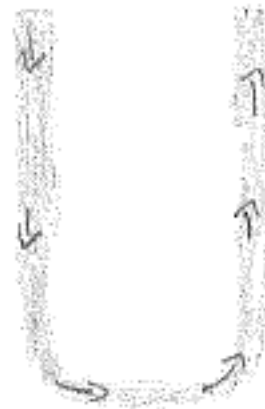
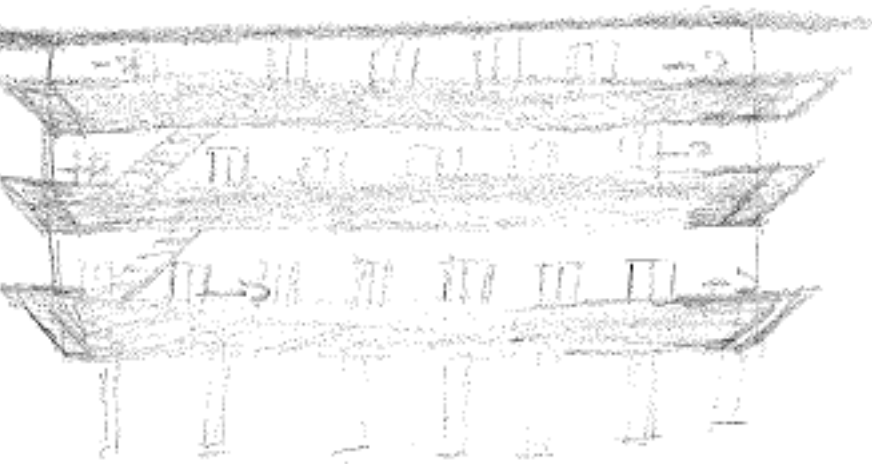
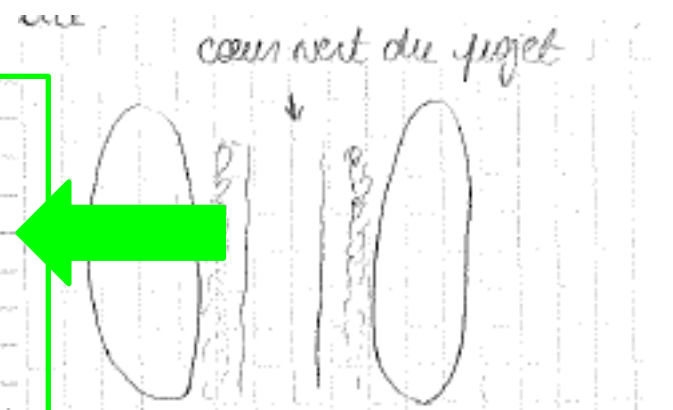
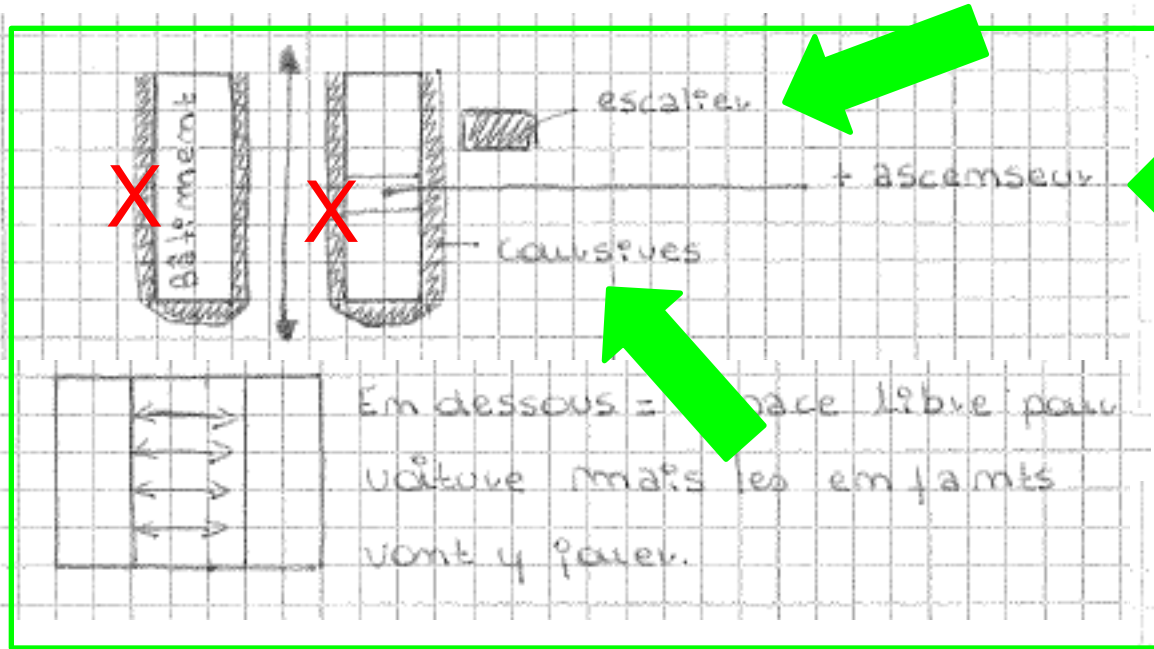


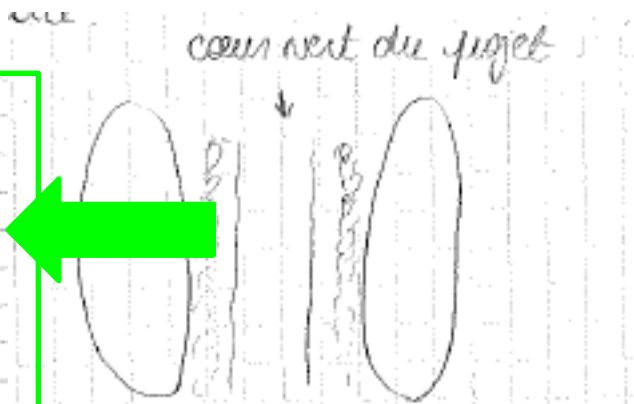
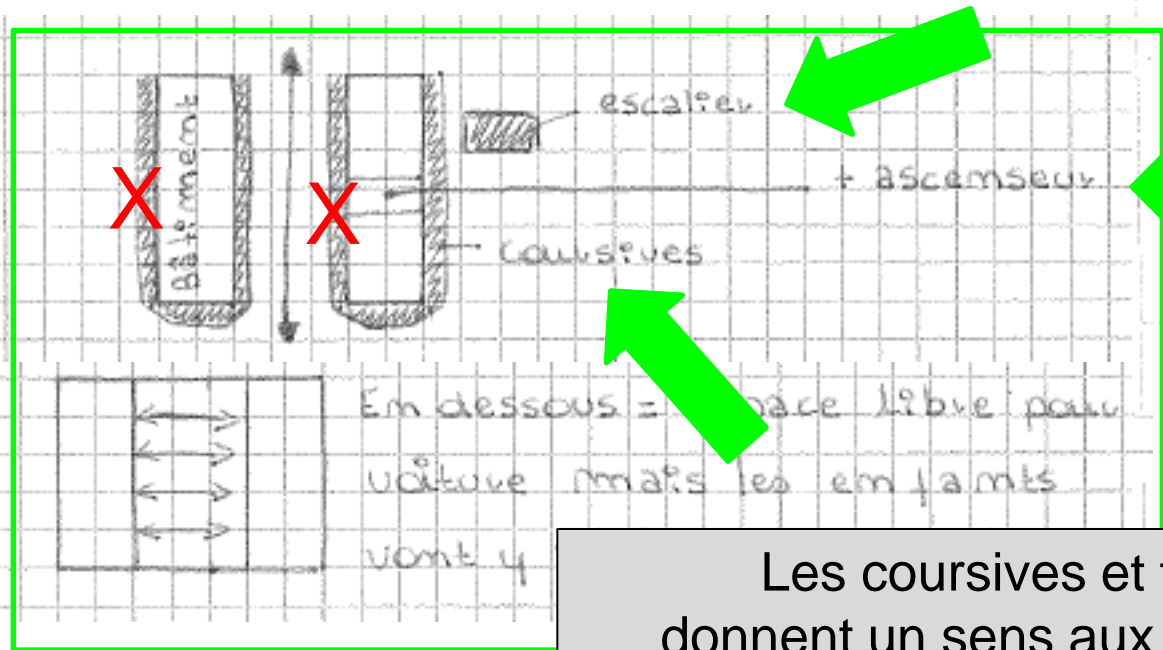
me
cours vert du projet







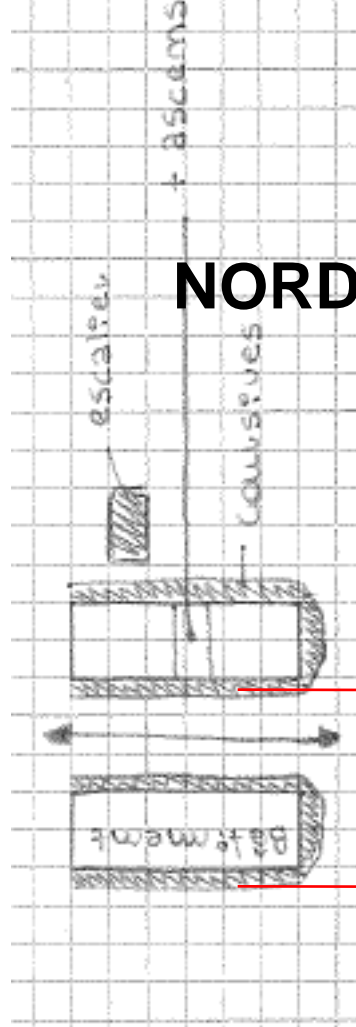




Les coursives et terrasses donnent un sens aux schémas: les circulations au nord (la partie du bâtiment le moins bien orienté) et les terrasses au sud (ensoleillement maximum), à partir de cette observation, les schémas sont orientés, comme des plans: nord en haut du document



OUEST



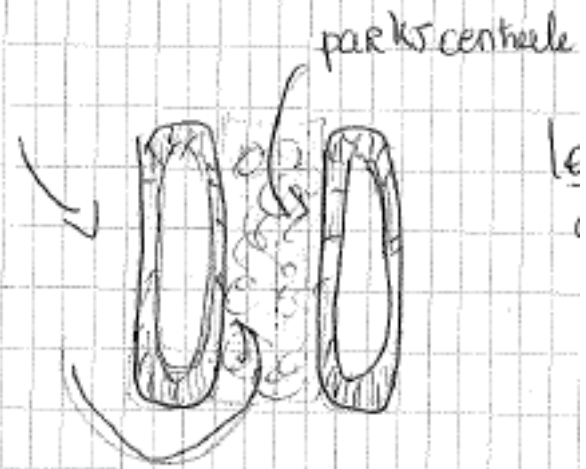
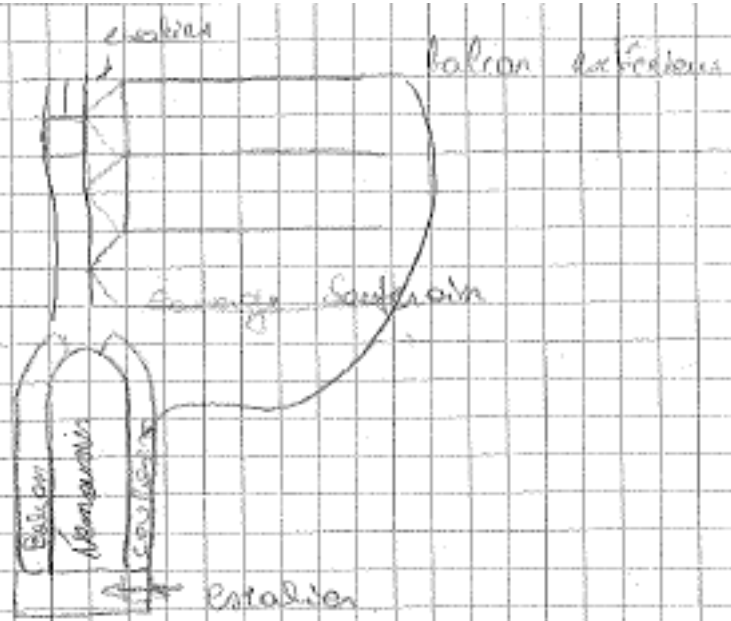
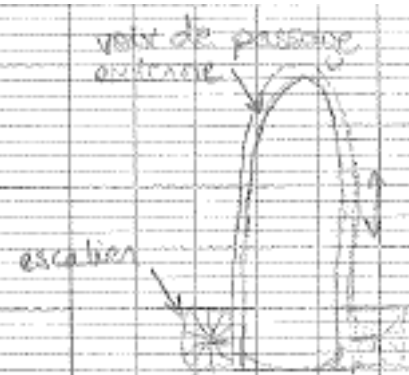
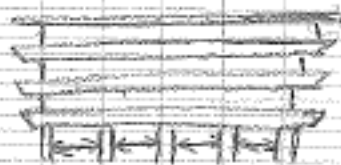
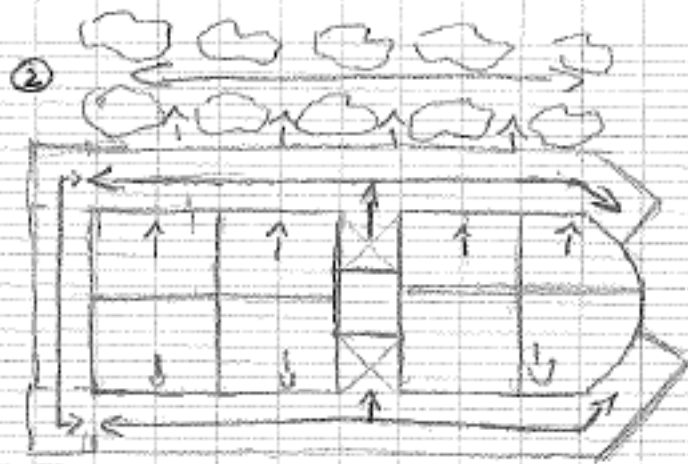
NORD

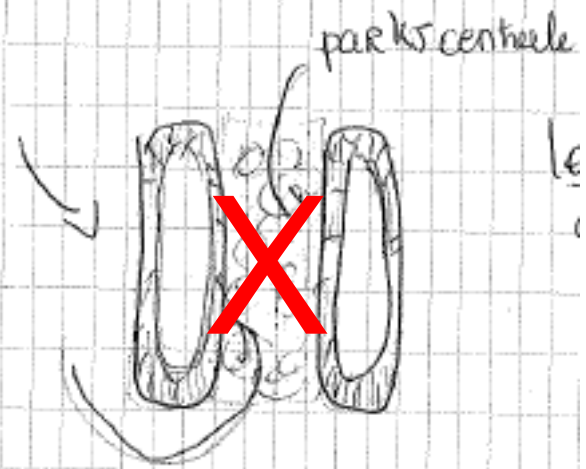
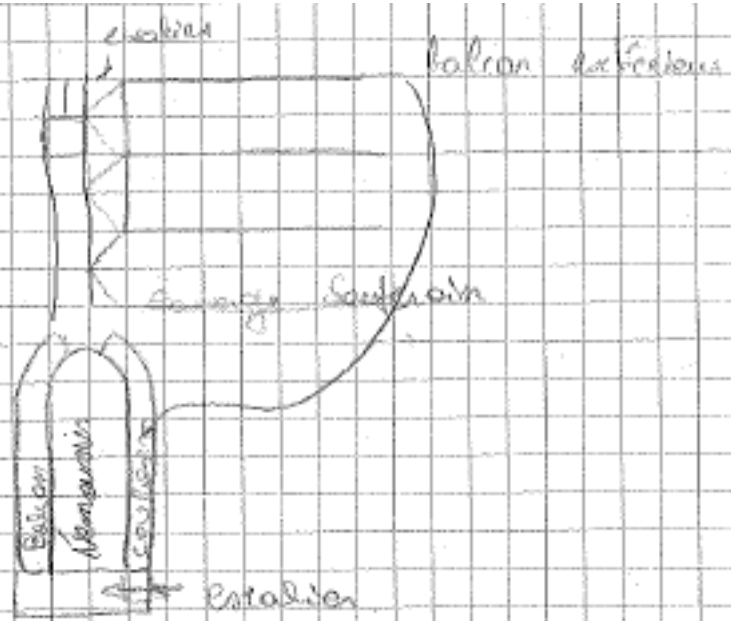
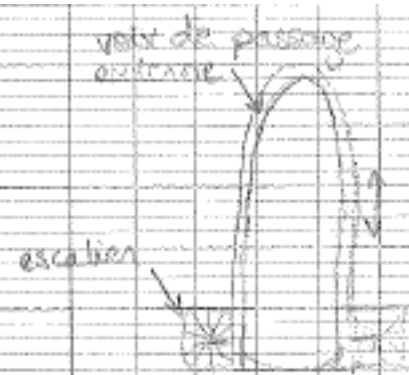
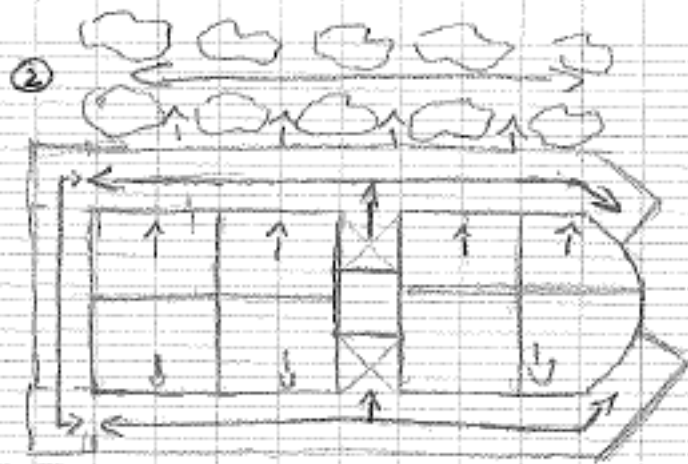
Terrasses

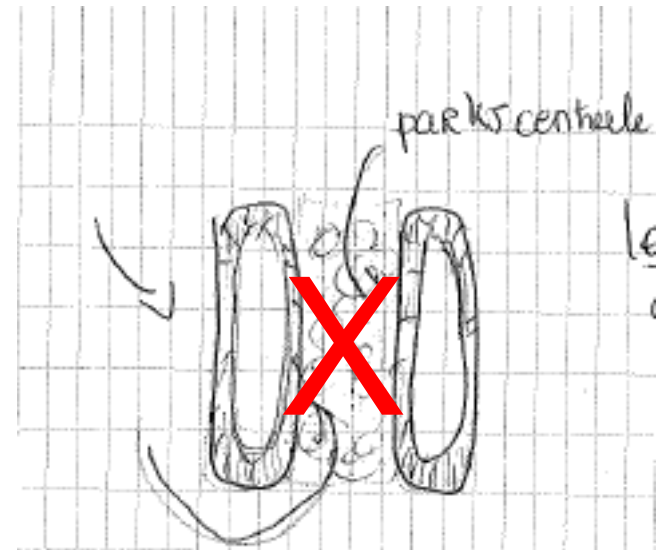
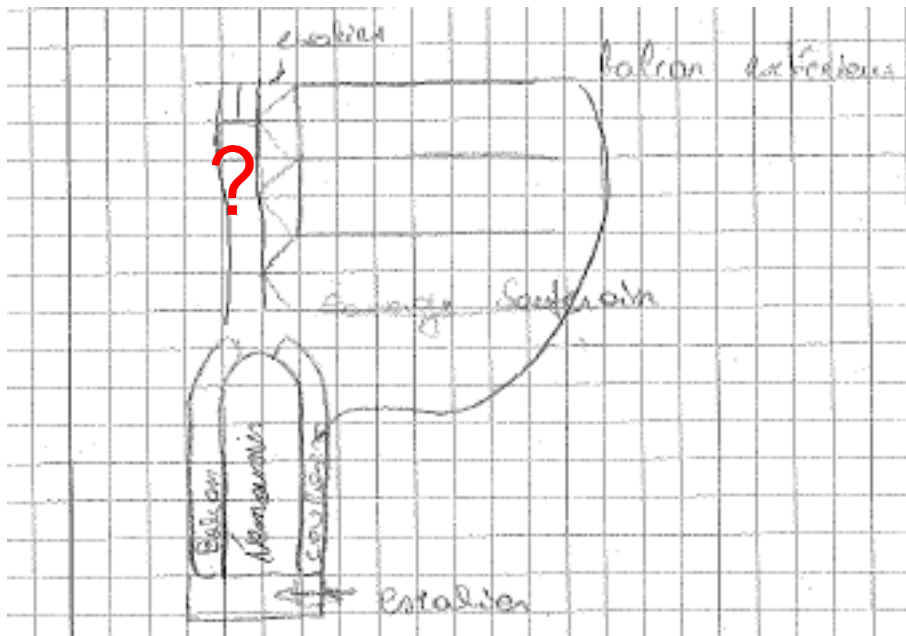
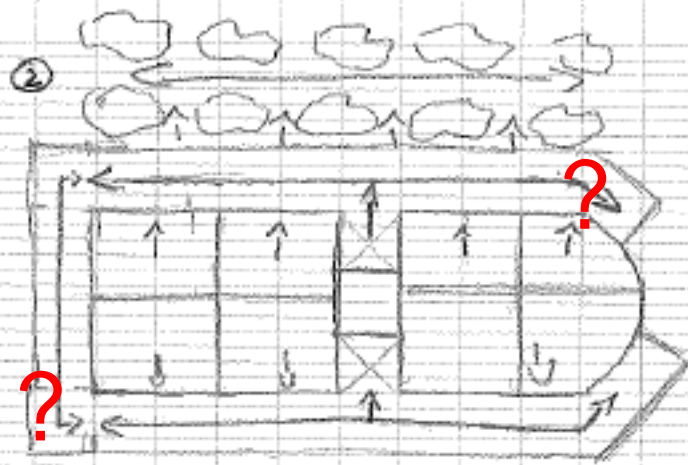
EST

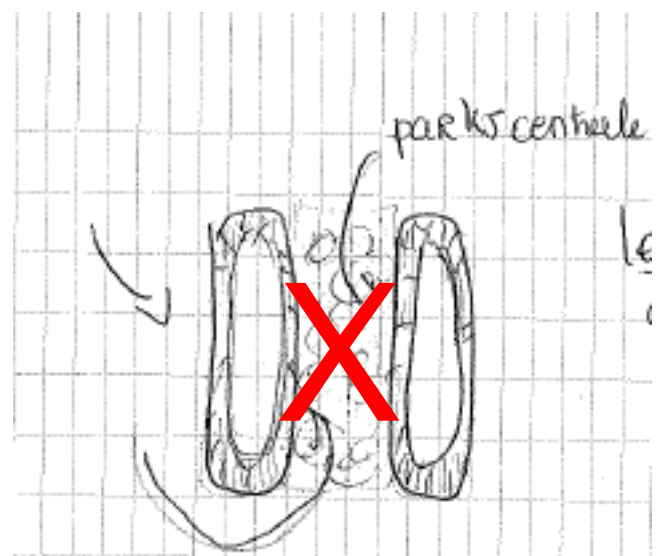
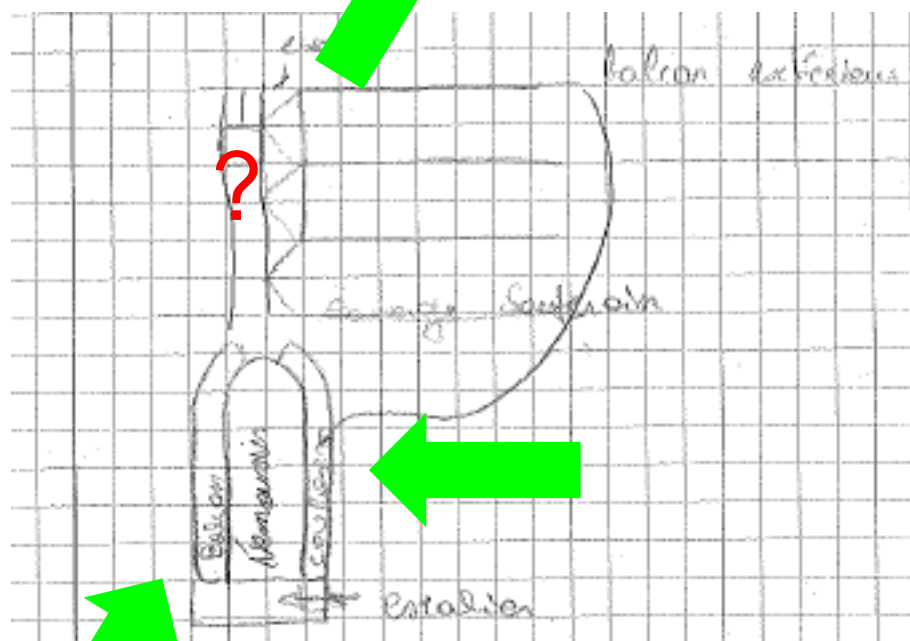
Terrasses

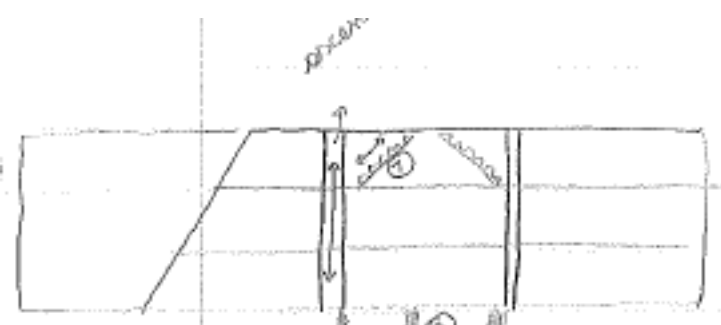
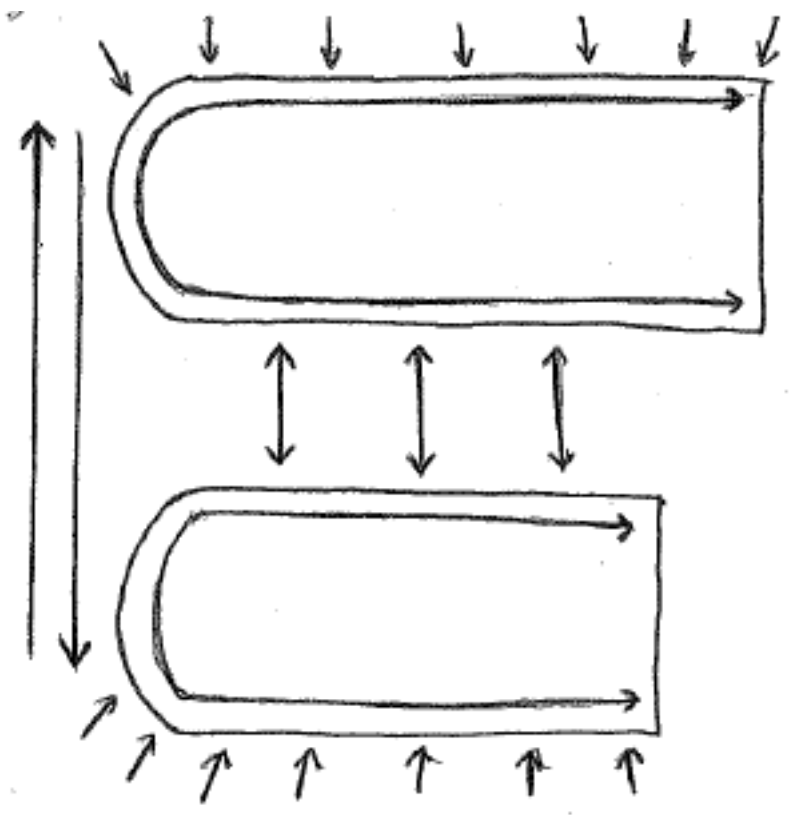
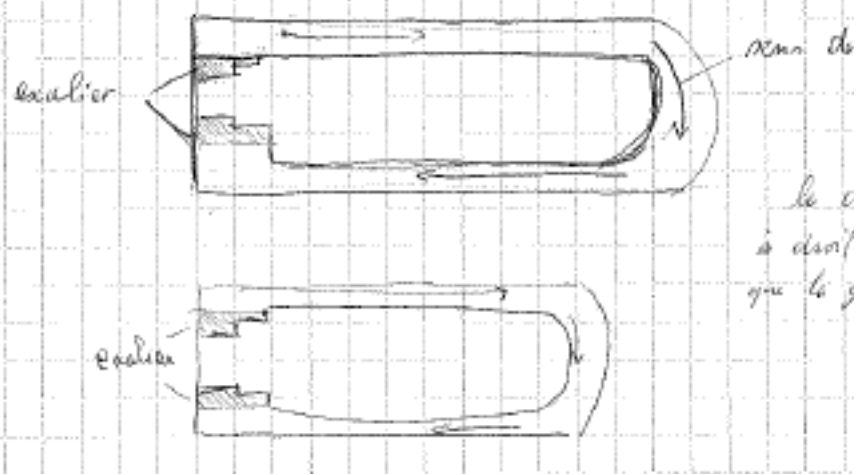
SUD



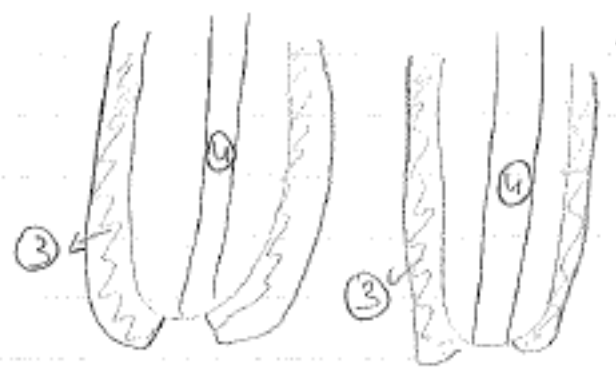




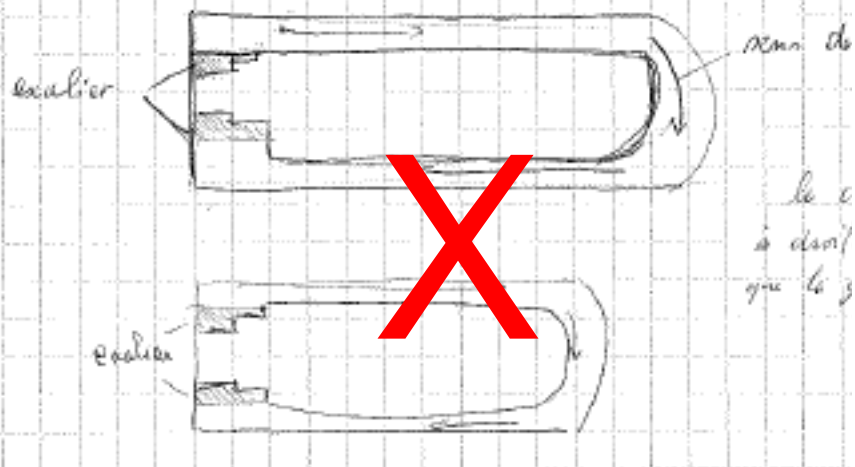




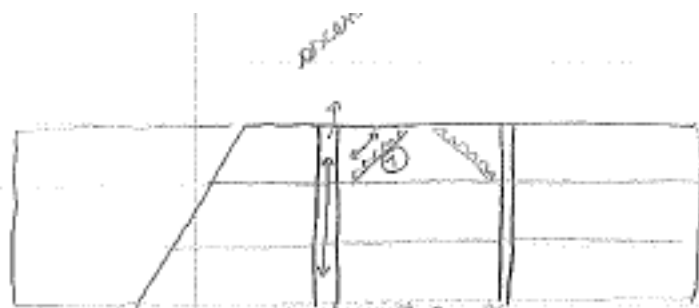
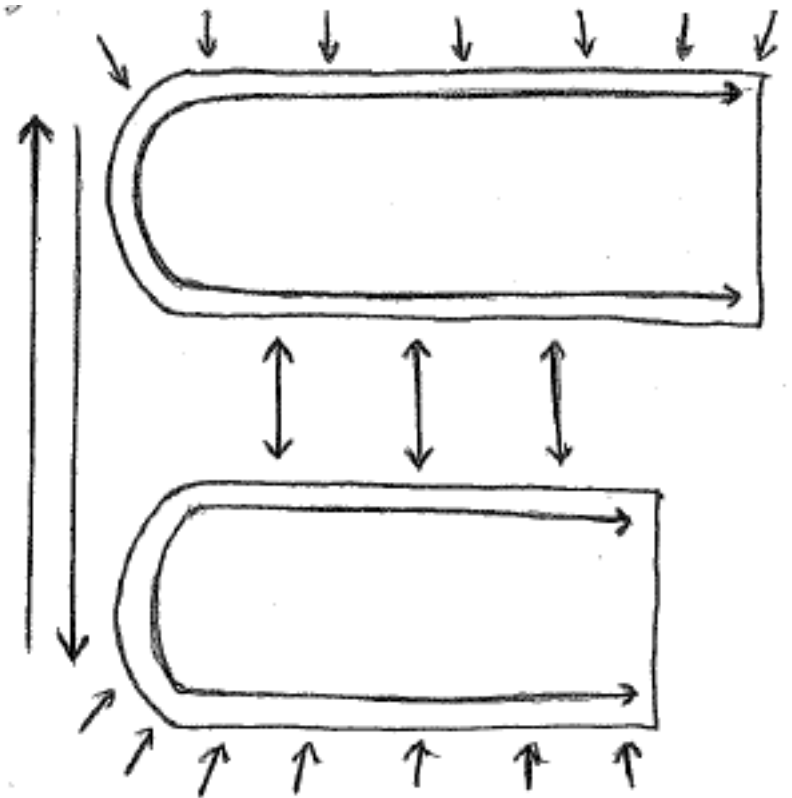
- ① les escaliers
- ② le piston



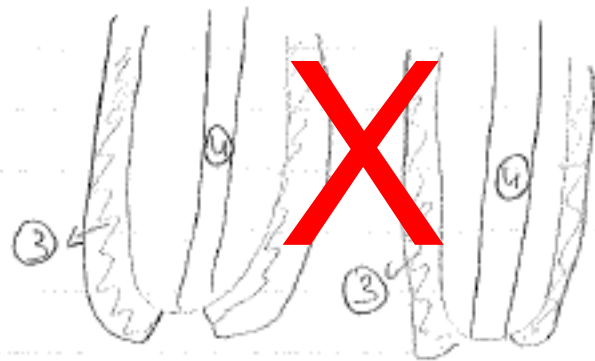
- ③ balais pour ranger
- ④ caudoir avec les portes d'entrées.



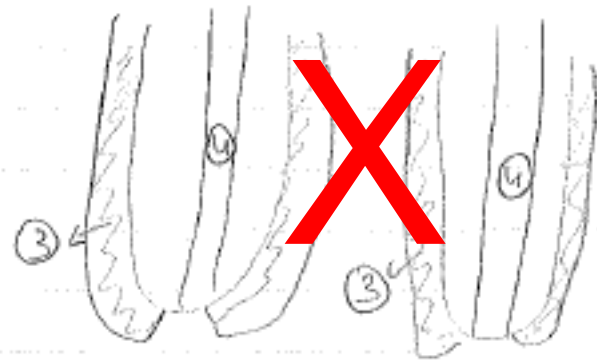
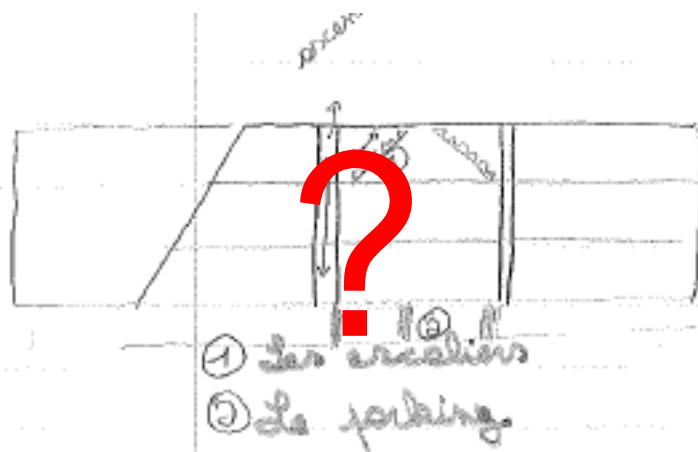
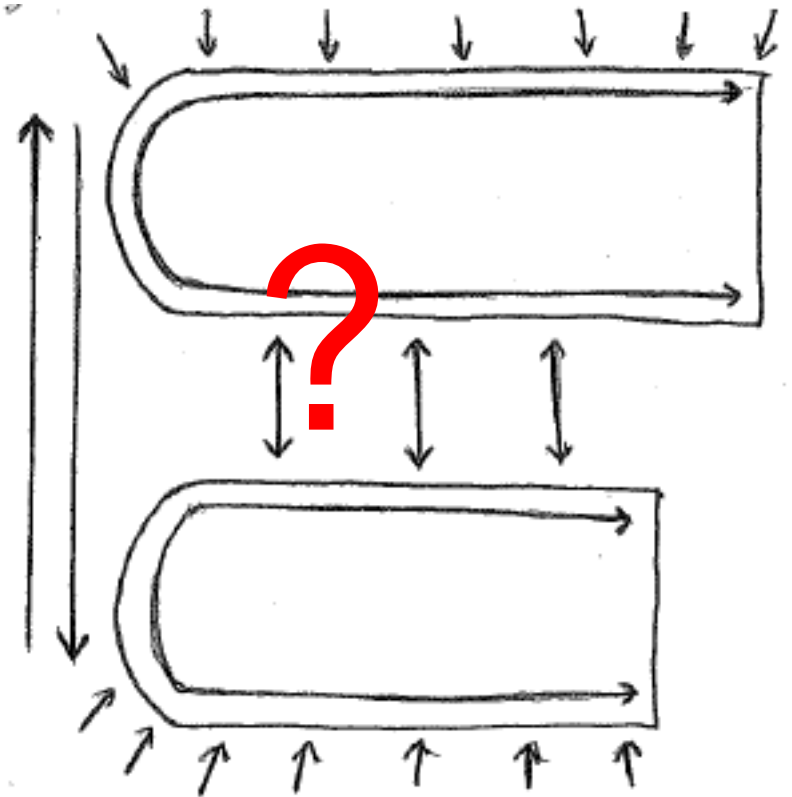
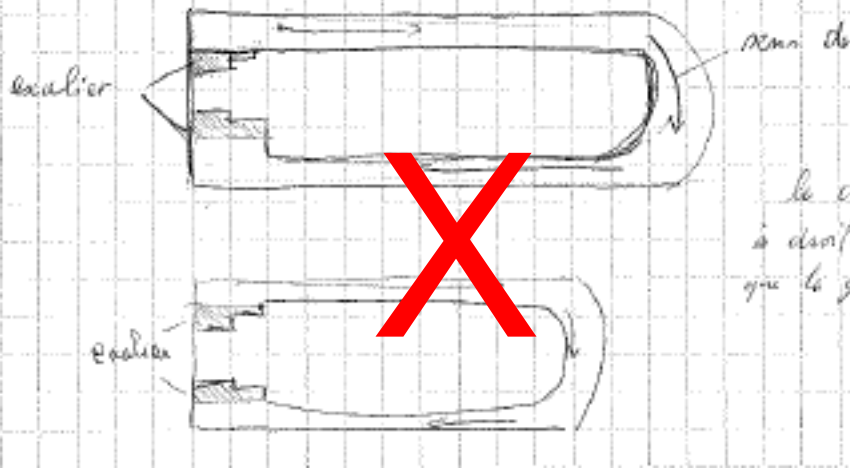
le c
à dison/
que le 3



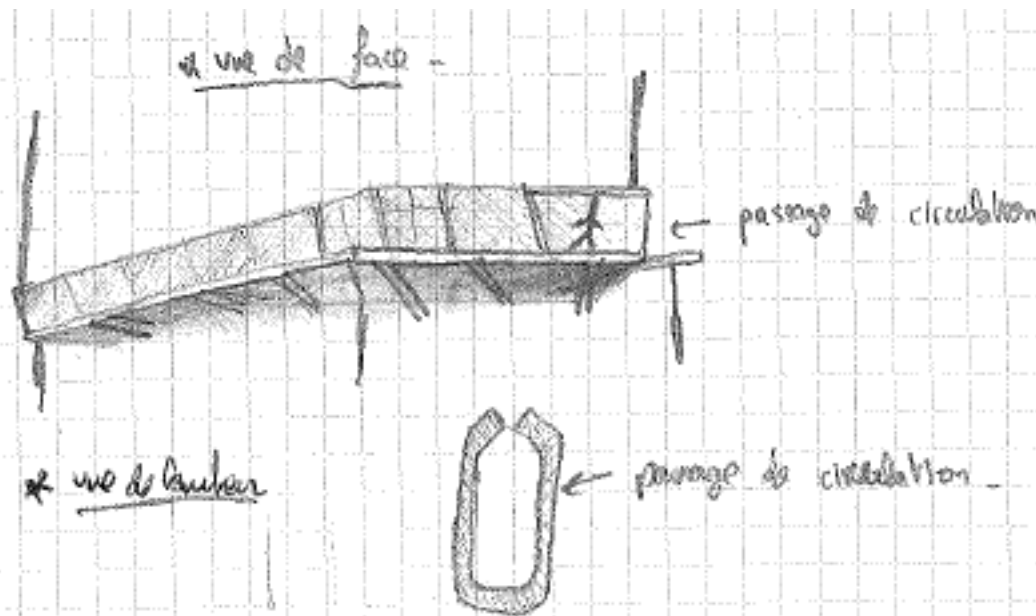
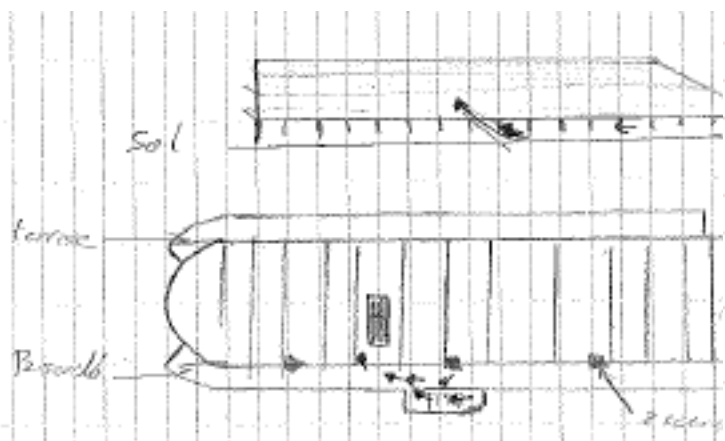
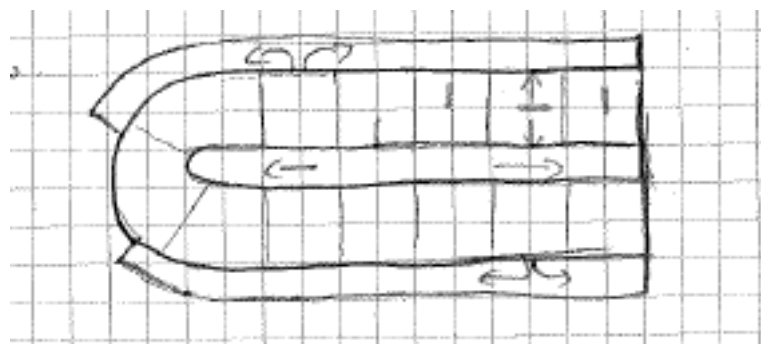
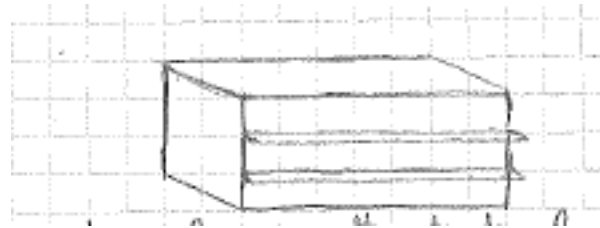
- ① les escaliers
- ② le forking

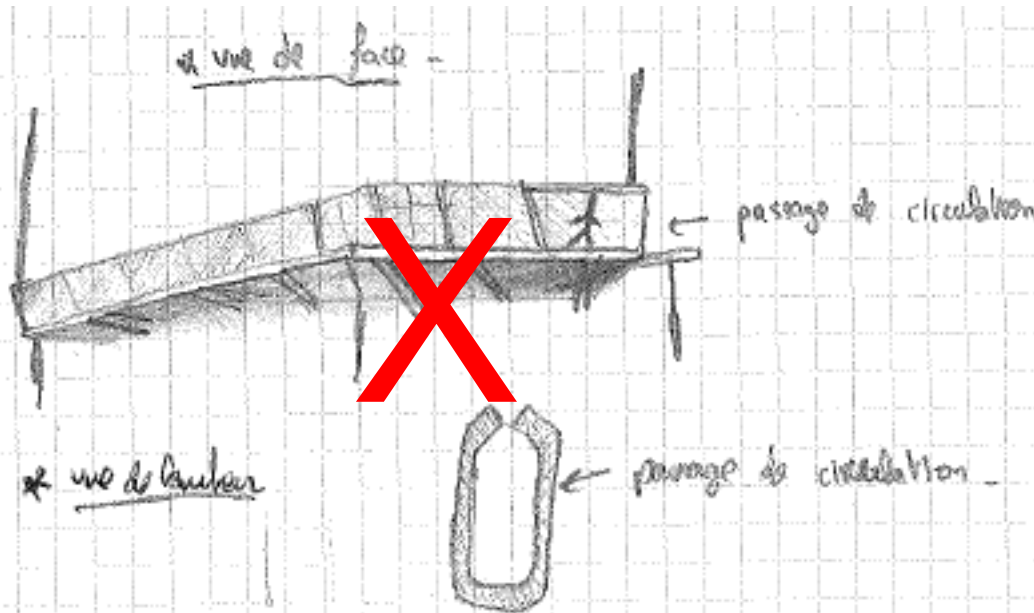
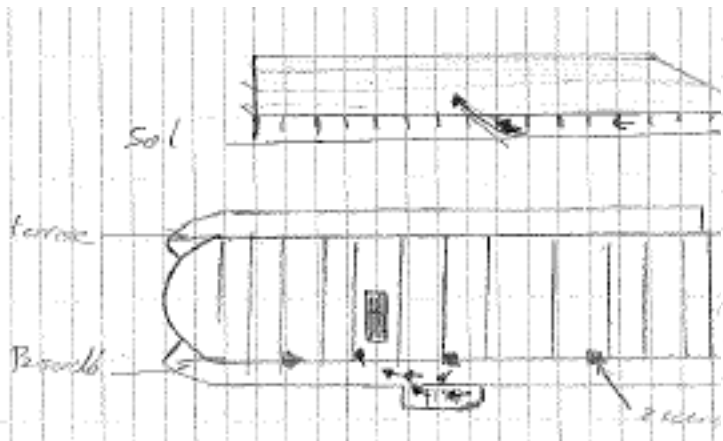
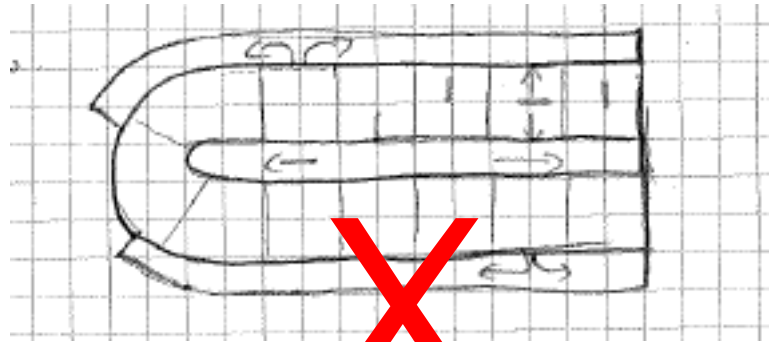
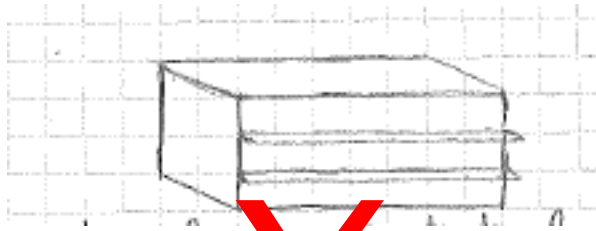


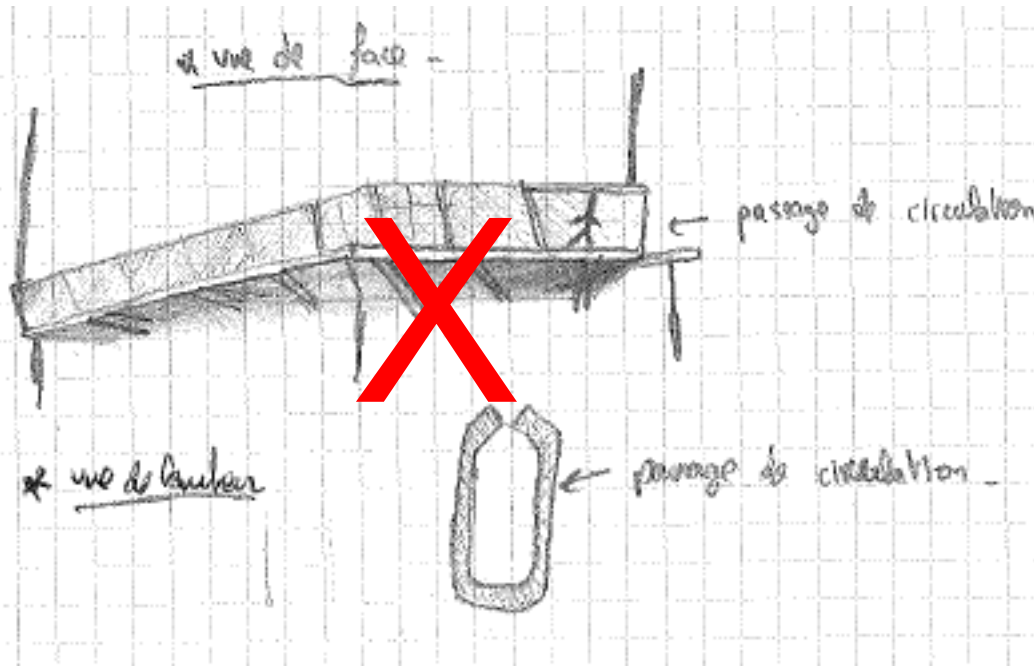
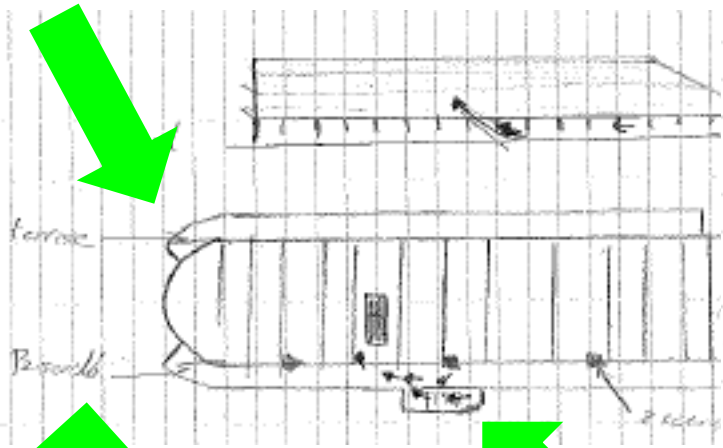
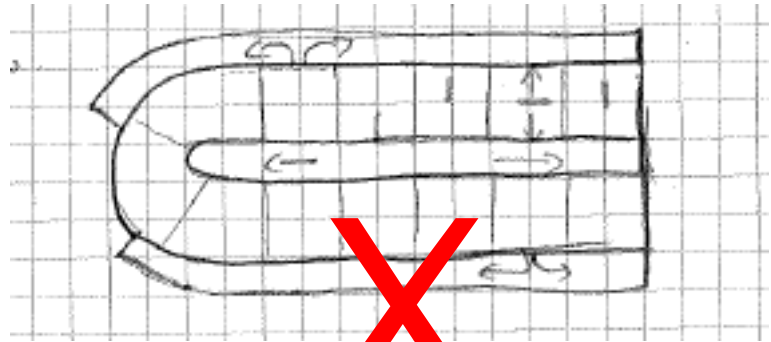
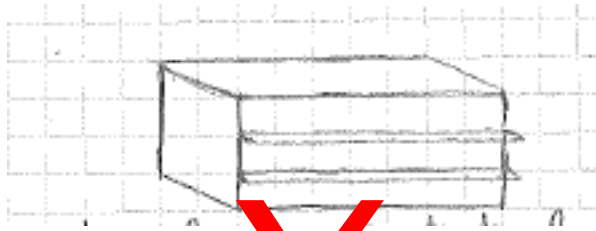
- ③ balcons pour ranger
- ④ couloir avec les portes d'entrées.



- ③ balcons pour ranger
- ④ couloir avec les portes d'entrées.

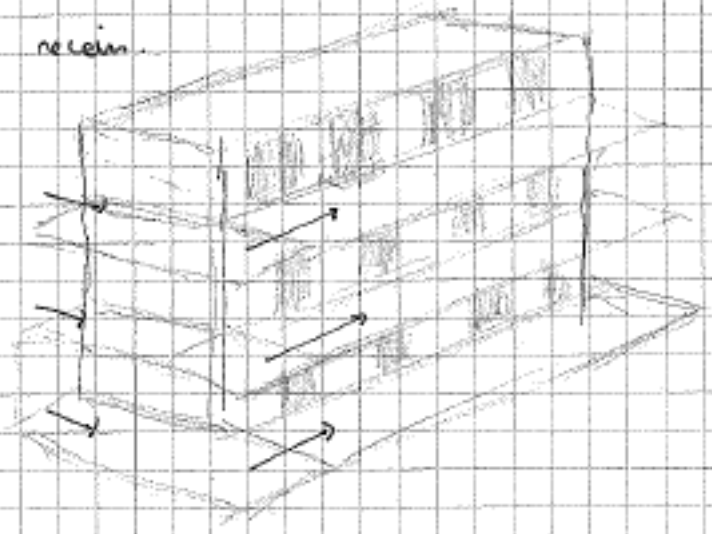




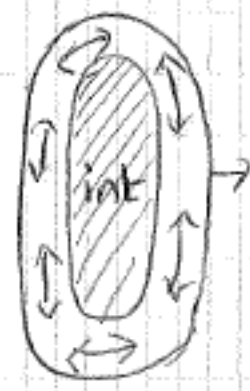


comme si on l'avait prise ses dimensions à l'origine → assemblée → double → maître

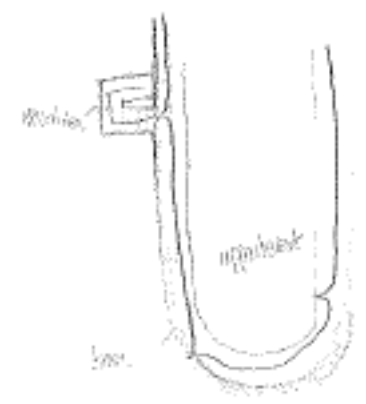
recevoir



à habiter -

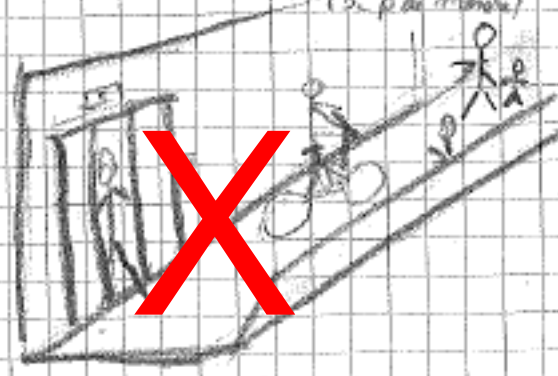
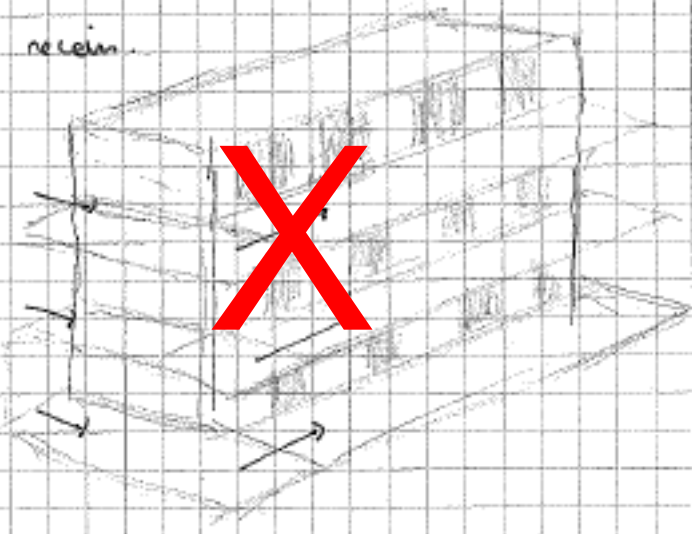


circulation
à l'extérieur

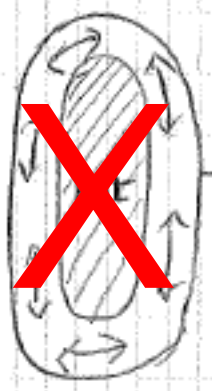


comme si on construisait que des habitations à parking → asbestose → douleur → maladie (à pied moule)

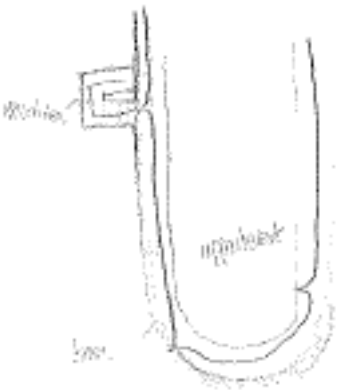
recevoir



à habitant -

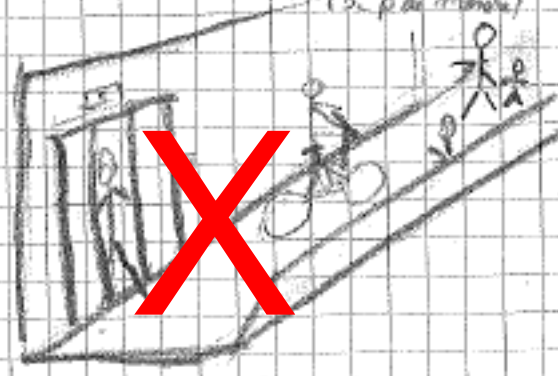
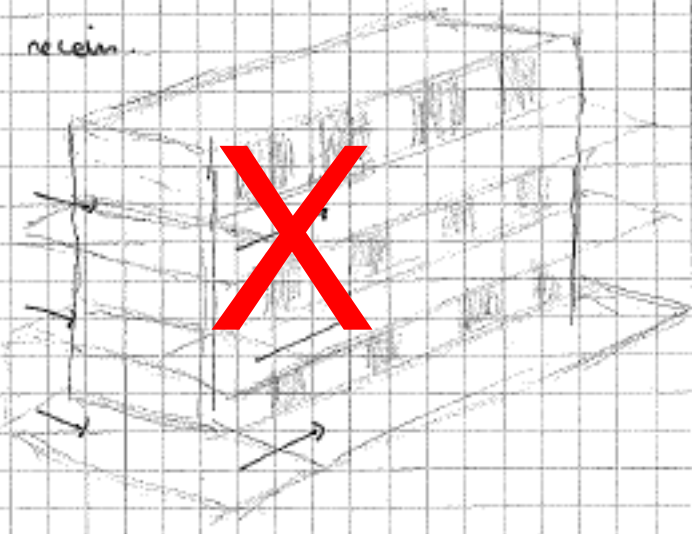


circulation à l'extérieur

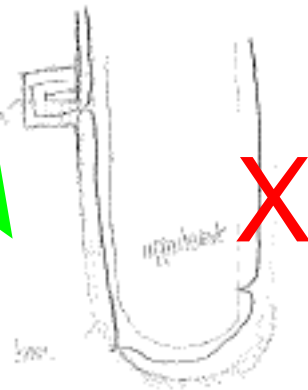


comme si on construisait que des habitations à parking → asbestose → douleur → maladie (à pied moule)

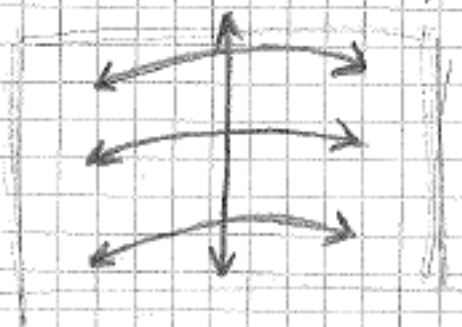
recevoir



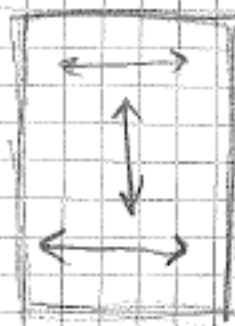
circulation à l'extérieur



- oscoment aussi à l'extérieure



- circulation intérieure

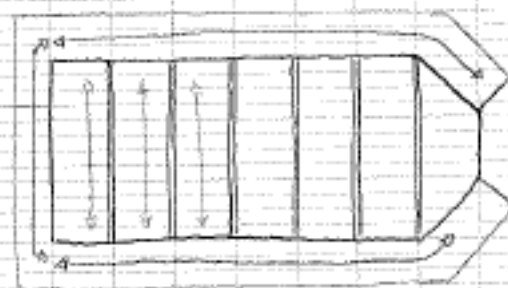


- un porche au front

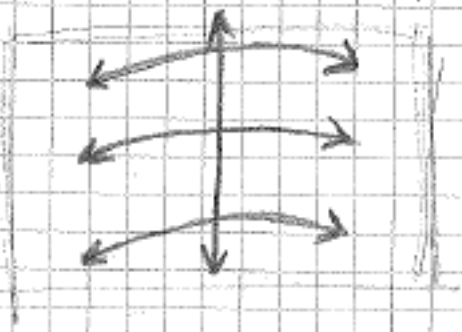


→ fron
appui
empu
et
a

↳ couloirs extérieurs

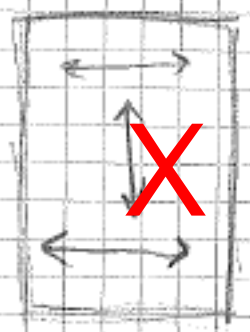


- osomkou aussi à l'extérieure



- x
- c
- y

- circulation intérieure

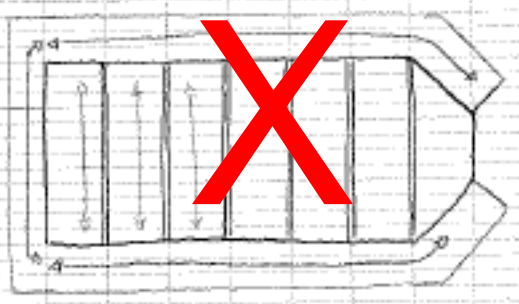


- un poraloi à
la front 2

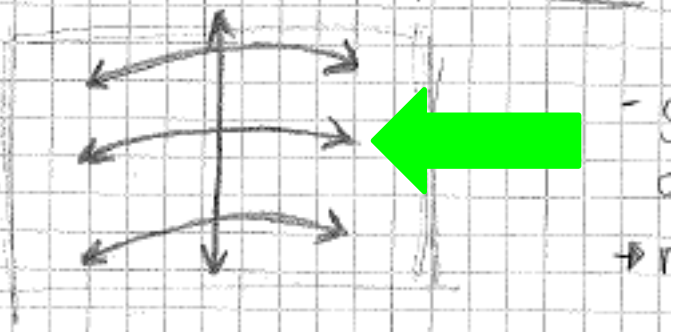


fron
ciol
empu
et
a

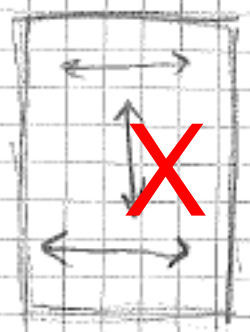
cauloin extérieu



- osomkou aussi à l'extérieure



- circulation intérieure

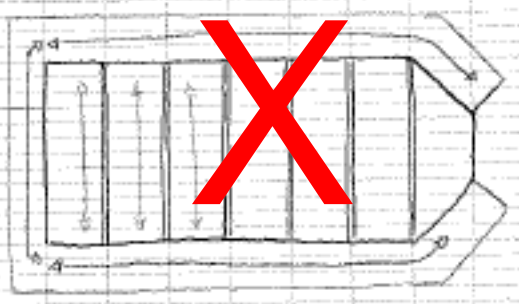


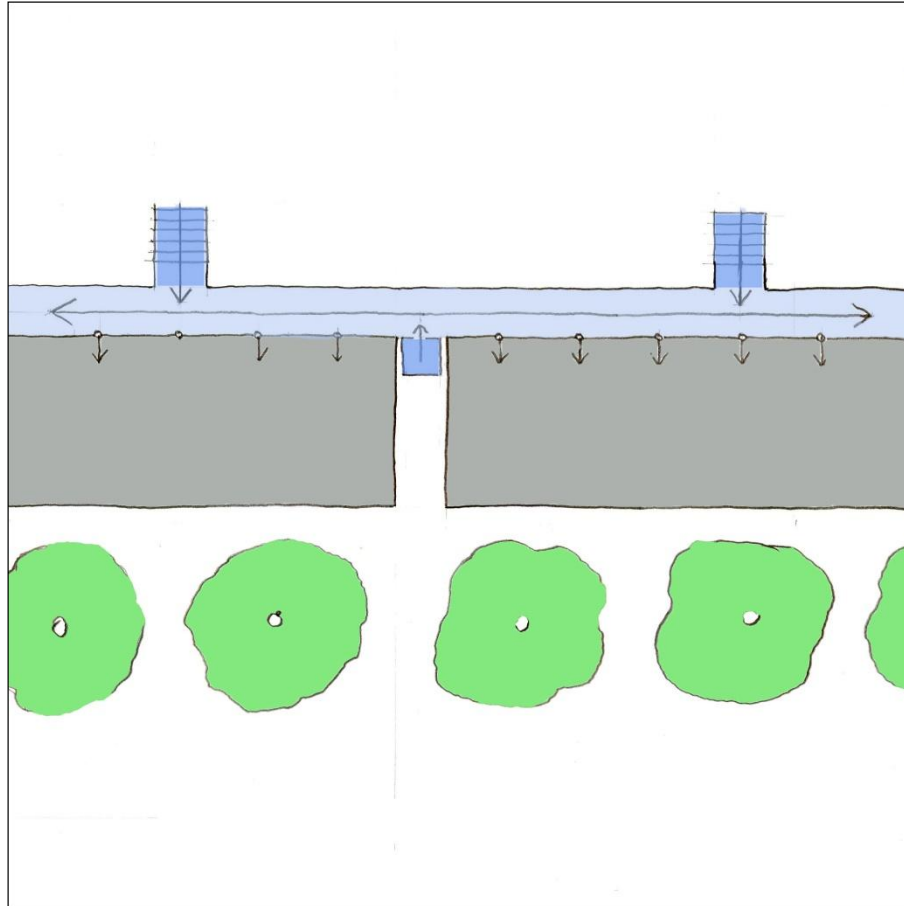
- un passage à l'avant



fron
ciel
empu
et
a

↳ couloir extérieur



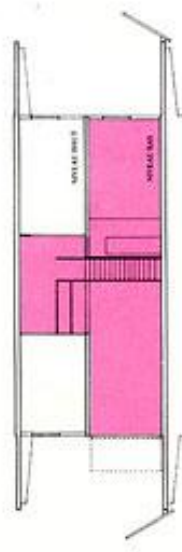
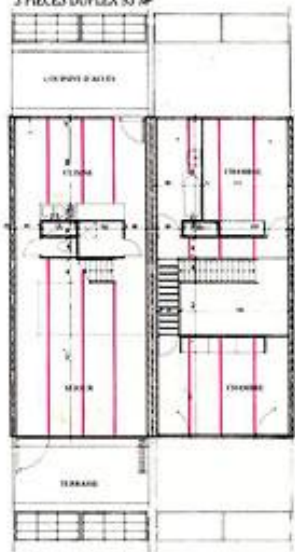


Expliquez par quelques traits et mots,
le principe constructif de « Némausus »

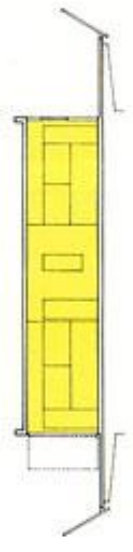
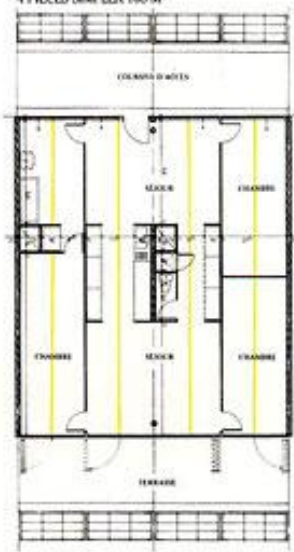




3 PIÈCES DUPLEX 93 M²

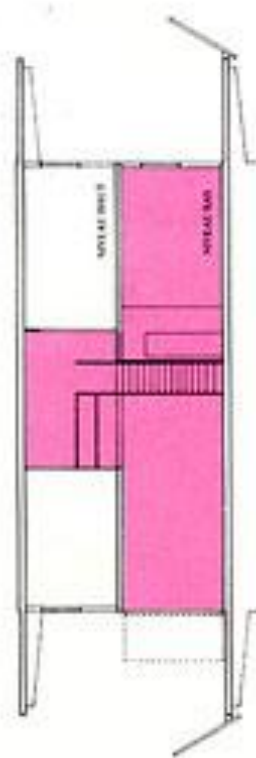
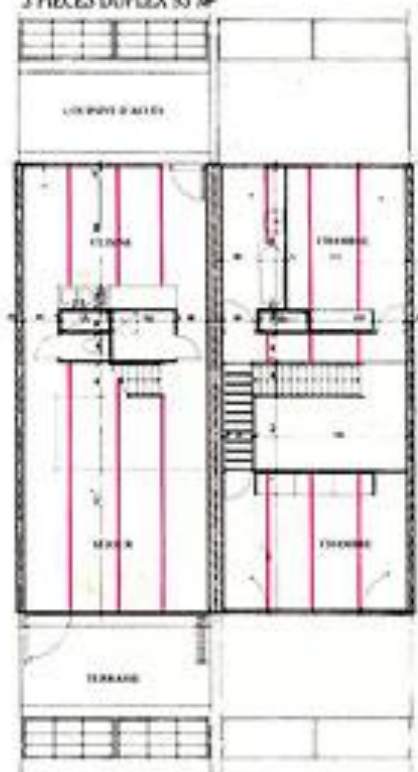


4 PIÈCES SIMPLEX 108 M²





3 PIÈCES DUPLEX 93 M²



4 PIÈCES SIMPLEX 108 M²

